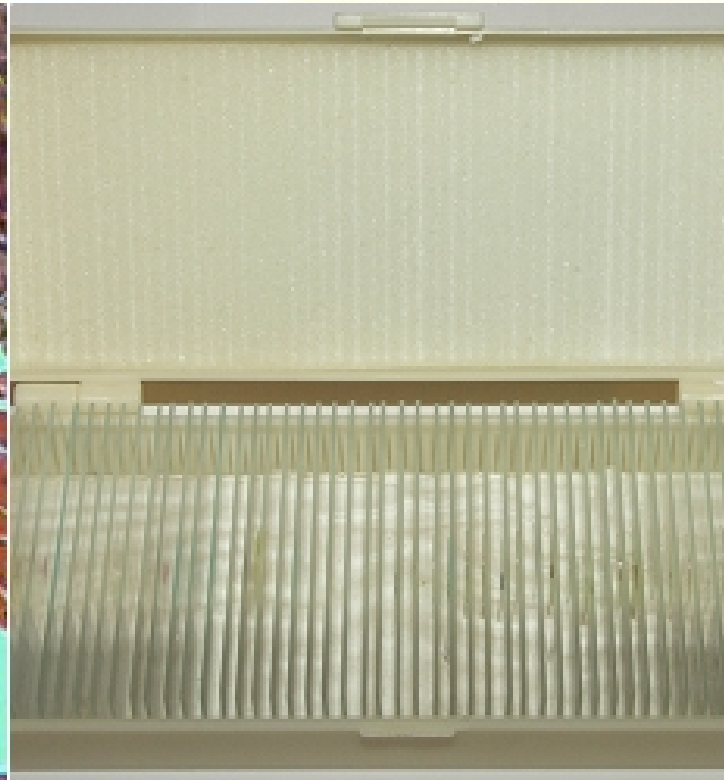
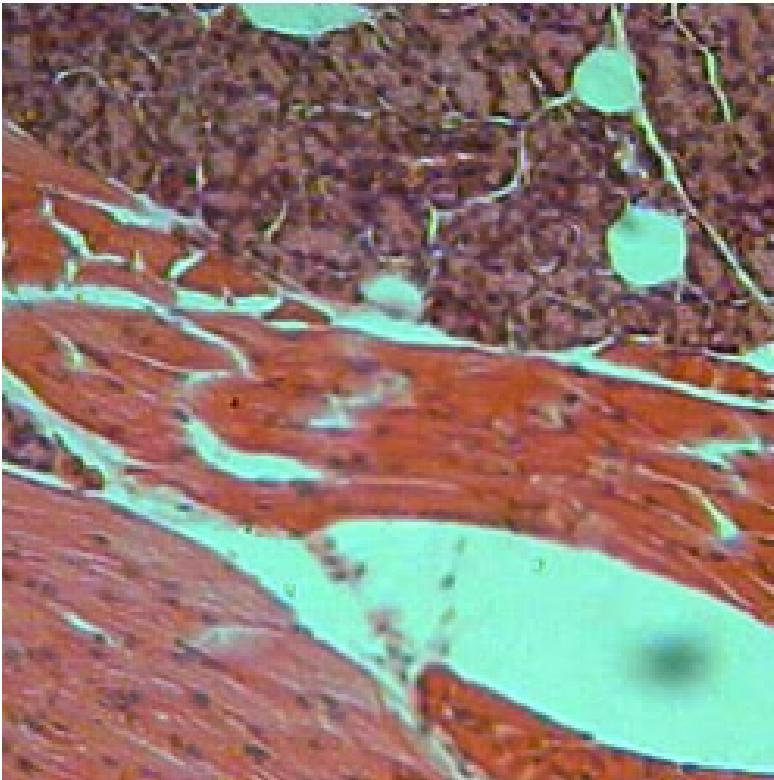
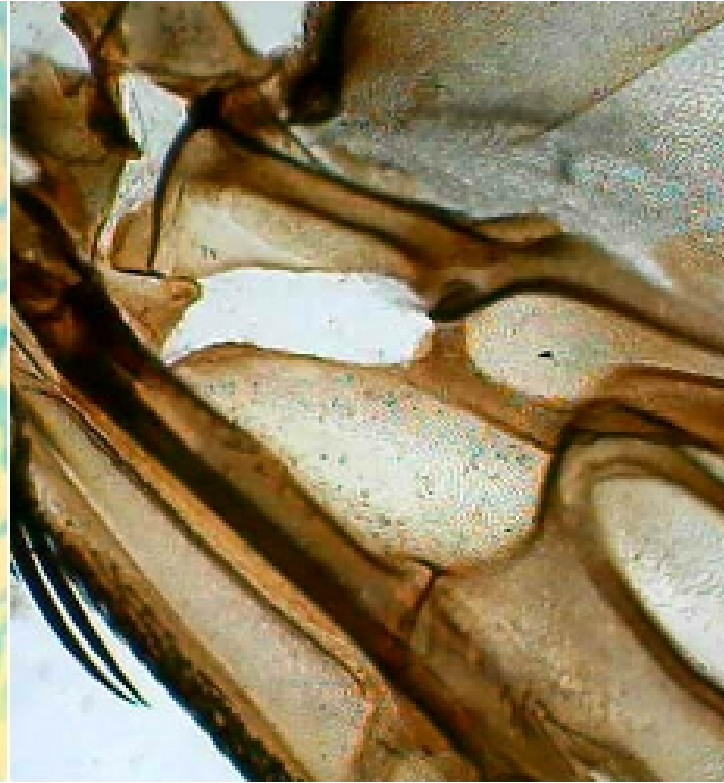
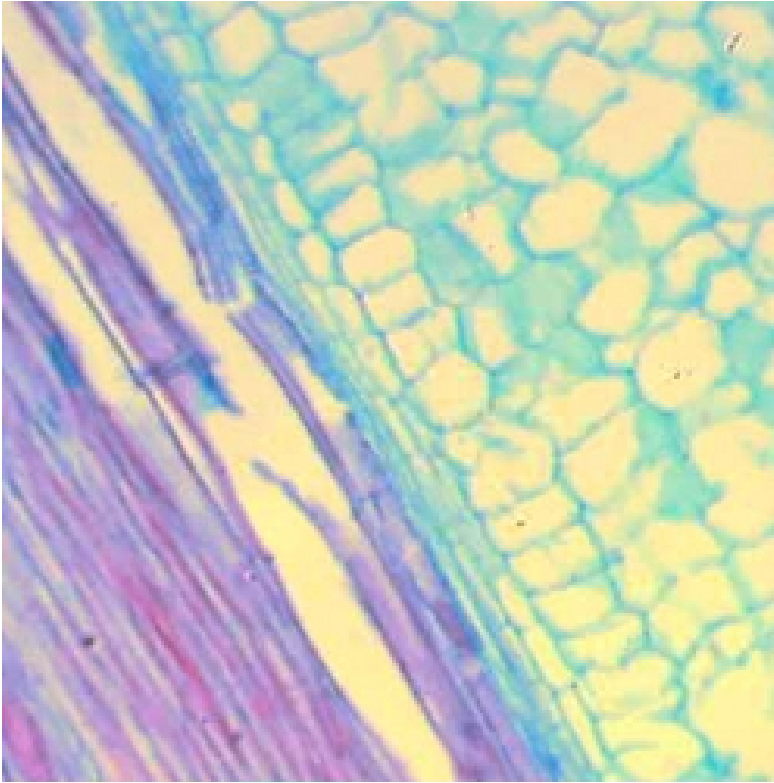


# teleskopy.pl



A wonderful set of biological preparations for schools and biology lovers. A set of biological preparations of 50 pieces delivered in a plastic box. The kit contains both plant and animal tissues - professionally dyed and prepared. The set contains the following preparations: 1. broad bean leaf epidermis 2. penicillium (penicillium) 3. a slipper in m (called paramecium in m) 4. smooth muscle 5. epidermal cell onion 6. fish squama 7. stalk stem (pine stem) 8. squamous epithelial of human mouth scraping 9. nylon fibers 10. daphnia in m (English: daphnia wm) 11. mature pine pollen (mature pollen grain) 12. housefly wing in m (housefly wing wm) 13. bird feather in m (bird feather in m) 14. spirochera (type of algae) (spirogyra conjugation) 15. protonema moss (moss protonema wm) 16. germinating pollen (pollen germinate in m) 17. leg of a housefly in m (housefly foot wm) 18. frog blood - blood of frog smear 19. cotton fibers 20. cell of the cork oak - suber cell section 21. print - letter "e" (letter "e" in m) 22. Butterfly hull in m (butterfly squama in m) 23. leaf cotton cs (cotton leaf cs) 24. stu<sup>3</sup>bia - cross section (hydra cs) 25. the cell of leaves leaves in m (hydra leaf cell in m) 26. linden trunk - limewood stem cs 27. amber (Chlamydomonas green algae, type of

---

algae) ( chlamydomonas in m ) 28. three types of bacteria - bacterial three types - smear 29th pine needle - cross-section ( pine leaf cs ) 30. parts of the housefly mouthpiece in m ( housefly mouth parts in m ) 31. skin of a frog - skin-frog section 32. corn root - corn root cs 33. Stuba - longitudinal section ( hydra ls ) 34. The crystal of a salt (ang. Salt crystal) 35th tip of a young pine cone - pine root tip ls (cone) 36. root tip tip ( plant root tip ls ) 37. single-stalk stem - cross-section ( monocotyledon stem cs ) 38. stem of glaucous plant - cross section (called ranunculus japonicus stem cs ) 39. lily stamen - stilla - (called lillium anther section ) 40. large intestine - large intestine section 41. moss - longitudinal section ( moss ls ) 42. wool fibers in m ( wool fibers in m ) 43. silk fibers 44th rabbit hair 45. corn starch 46. leaf of a ligust - privet leaf cs 47. human blood - human blood smear 48. kropidlak wm (ang. Aspergillus in m ) 49. mosquito larvae in m ( mosquito larva wm ) 50. Stuba in m ( hydra wm ) WM - whole mount CS - cross section LS - long section - Smear - smear